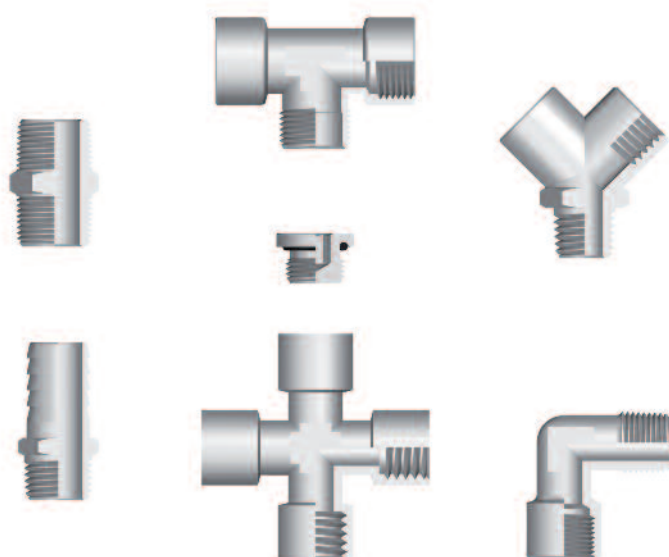




Serie/Series **Accessories**

RACCORDI STANDARD
FIXTURES AND FITTINGS



Pressioni e Temperature | Pressures and Temperatures

Data la varietà dei prodotti che compongono questa gamma, non é possibile definire valori di temperatura e pressione per tutti gli articoli. **Di seguito riportiamo le pressioni e temperature massime consigliate per gli articoli dal 2000 al 6080 che non hanno o-ring; In tal caso consultare i valori di temperatura e pressione direttamente sulla tabella dell'articolo.**

Given the vastness of this range, it is not possible to define the exact values of temperature and pressure valid for all the items. Hereunder, we specify the values of the maximum pressure advised, from the art. 2000 to the 6080 that have not o-ring; in which case refer to the temperature and pressure directly on the table the article.

MISURA SIZE	PRESSIONE MASSIMA CONSIGLIATA MAXIMUM PRESSURE ADVISED	TEMPERATURA MASSIMA MAXIMUM TEMPERATURE
1/8	150 bar	300° C
1/4	100 bar	300° C
3/8	75 bar	300° C
1/2	50 bar	300° C
3/4	85 bar	300° C
1"	80 bar	300° C

I valori di pressione in tabella sono stati ottenuti adottando un Coefficiente di sicurezza 4. Per impieghi in condizioni particolari vogliate consultarci.

It must be taken into account that the pressure values indicated are calculated considering a Safety Factor of 4. We advised you to contact us if You use them in particular working conditions.

Scheda Materiali | Specifications

La maggior parte degli articoli di questa serie é composta da un unico particolare in OT UNI EN 12164/5 CW 614/7N e subisce un trattamento galvanico di nichelatura.

The main part of these fittings is made in OT UNI EN 12164/5 CW 614/7N and undergo to a nickel-plating process.

Articoli prodotti in materiali diversi, verranno specificati all' interno del catalogo.

Different materials will be specified in the catalogue.

Filettature | Threads

Gas conica conforme ISO 7.1, BS 21, DIN 2999 / Tapered gas in conformity with ISO 7.1, BS 21, DIN 2999.
 Gas cilindrica conforme ISO 228 Classe A / Parallel gas in conformity with ISO 228 Class A.
 Metrica conforme ISO R/262 / Metric in conformity with ISO R/262.

Tubi di collegamento | Connection Tubes

Tubi e raccordi in genere.

Tubes and fittings in general.

Fluidi compatibili | Fluids

Acqua, olio, aria compressa, fluidi in genere per l' impiantistica idraulica, oleodinamica, idropneumatica, ecc.

Water, oils, compressed air, fluids in general for the hydraulic, pneumatic and oildynamic plants etc.

COME ORDINARE

I raccordi standard della Serie ACCESSORI prevedono:

- Trattamento superficiale di NICHELATURA

Per formulare un ordine é sufficiente specificare **ARTICOLO, MISURA, QUANTITA'**.

HOW TO ORDER

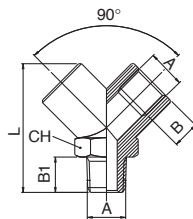
The standard items called **FIXTURES AND FITTINGS** are supplied with:

- Surface treatment of **NICKEL-PLATING**

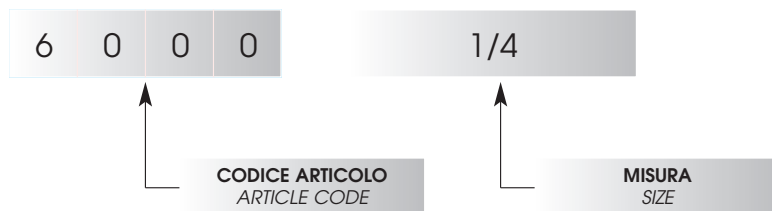
To order simply specify the **ARTICLE CODE, SIZE and QUANTITY**.

6000

RACCORDO A Y 90° MASCHIO - MALE Y 90°



A	B	B1	L	CH	Conf. Pack.
1/8	8	9	33	14	50
1/4	11	11	37	17	25
3/8	11.5	12.5	46	22	20
1/2	14	16.5	58	26	20



I seguenti articoli pur essendo o di altro materiale o con diverso trattamento superficiale, vengono ordinati allo stesso modo:

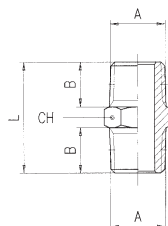
- Art. 2060 e Art. 2095 che vengono forniti senza alcun trattamento superficiale;
- Art. 6040, Art. 6047 e Art. 6048 che vengono prodotti in alluminio anodizzato.

The following items even if they are made in different material or they undergo to a different surface treatment, must be ordered in the same way, i.e.:

- Art. 2060 and Art. 2095 are supplied with no surface treatment, but they are self coloured brass.
- Art. 6040, Art. 6047 and Art. 6048 are made in aluminium and they are anodized.

2000

NIPPLO CONICO - NIPPLE (TAPER)

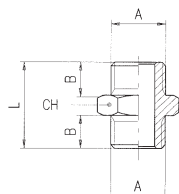


A	B	L	CH	Conf. Pack.
1/8	7.5	19.5	12	50
1/4	11	27	14	50
3/8	11.5	28	17	25
1/2	14	33.5	22	25
3/4	16.5	40	27	25
1"	19	46.5	34	10



2010

NIPPLO CILINDRICO - NIPPLE (PARALLEL)

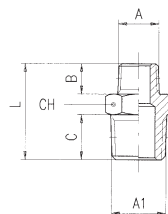


A	B	L	CH	Conf. Pack.
M5	4	11.5	8	50
1/8	6	16.5	14	50
1/4	8	21	17	50
3/8	9	23	19	25
1/2	10	25.5	24	25



2020

NIPPLO DI RIDUZIONE CONICO - REDUCING NIPPLE (TAPER)

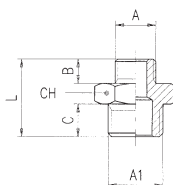


A	A1	B	C	L	CH	Conf. Pack.
1/8	- 1/4	7.5	11	23.5	14	50
1/8	- 3/8	7.5	11.5	24	17	25
1/8	- 1/2	7.5	14	27	22	25
1/4	- 3/8	11	11.5	27.5	17	25
1/4	- 1/2	11	14	30.5	22	25
3/8	- 1/2	11.5	14	31	22	25
1/2	- 3/4	14	16.5	37.5	27	25
3/4	- 1"	16.5	19	44	34	10



2030

NIPPLO DI RIDUZIONE CILINDRICO - REDUCING NIPPLE (PARALLEL)

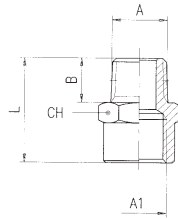


A	A1	B	C	L	CH	Conf. Pack.
M5	- 1/8	4	6	14.5	14	50
1/8	- 1/4	6	8	19	17	50
1/8	- 3/8	6	9	20	19	50
1/4	- 3/8	8	9	22	19	50
1/4	- 1/2	8	10	23.5	24	25
3/8	- 1/2	9	10	24.5	24	25
1/2	- 3/4	10	12	27.5	30	25



2040

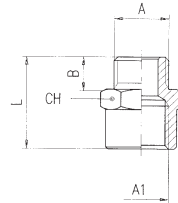
RIDUZIONE CONICA - REDUCER (TAPER)



A	A1	B	L	CH	Conf. Pack.
1/8	- 1/8	7.5	20	14	50
1/8	- 1/4	7.5	22	17	50
1/8	- 3/8	7.5	23	22	25
1/4	- 1/4	11	26	17	25
1/4	- 3/8	11	27	22	25
1/4	- 1/2	11	30	26	25
3/8	- 3/8	11.5	27.5	22	25
3/8	- 1/2	11.5	30.5	26	25
1/2	- 1/2	14	33	26	25
1/2	- 3/4	14	35	32	25

2050

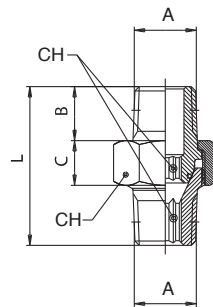
RIDUZIONE CILINDRICA - REDUCER (PARALLEL)



A	A1	B	L	CH	Conf. Pack.
M5	- 1/8	4	14.5	14	50
1/8	- 1/8	6	17	14	50
1/8	- 1/4	6	20.5	17	50
1/8	- 3/8	6	21.5	22	25
1/4	- 1/4	8	22.5	17	25
1/4	- 3/8	8	23.5	22	25
1/4	- 1/2	8	26.5	26	25
3/8	- 3/8	9	24.5	22	25
3/8	- 1/2	9	27.5	26	25
1/2	- 1/2	10	28.5	26	25

2060

NIPPO CONICO ORIENTABILE (3 pezzi) - TAPER NIPPLE (3 pieces)



A	B	C	L	CH1	CH2	Conf. Pack.
1/8	7.5	8.5	27	15	5	25
1/4	11	9.5	33.5	19	6	25
3/8	11.5	10	36.5	22	8	10
1/2	14	12	45	27	12	10
3/4	16.5	17	54	36	14	5
1"	19	20	65	46	19	1

ARTICOLO NON NICHELATO
ARTICLE NOT NICHEL-PLATED

Temperatura minima / Minimum temperature: -20 °C

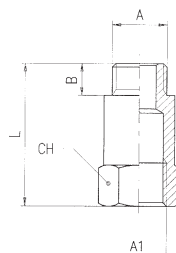
Temperatura massima / Maximum temperature: +80 °C

Pressione minima / Minimum pressure: -0.99 bar (-0.099 MPa)

Pressione massima / Maximum pressure: +15 bar (1.5 MPa)

2070

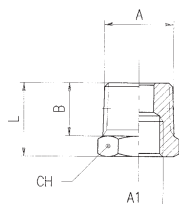
PROLUNGA CILINDRICA - EXTENSION (PARALLEL)



A	A1	L	B	CH	Conf. Pack.
1/8	- 1/8	- 22	6	14	25
1/8	- 1/8	- 42	6	14	25
1/4	- 1/4	- 35	8	17	25
1/4	- 1/4	- 51	8	17	25

2080

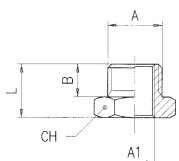
RIDUZIONE CONICA - REDUCER (TAPER)



A	A1	B	L	CH	Conf. Pack.
1/4	- 1/8	11	16	14	50
3/8	- 1/8	11.5	16.5	17	50
1/2	- 1/8	14	19.5	22	25
3/8	- 1/4	11.5	16.5	17	50
1/2	- 1/4	14	19.5	22	25
1/2	- 3/8	14	19.5	22	25
3/4	- 3/8	16.5	23.5	27	25
3/4	- 1/2	16.5	23.5	27	25
1"	- 1/2	19	27.5	34	10
1"	- 3/4	19	27.5	34	10
1"1/4	- 1/2	22	31	45	10
1"1/4	- 3/4	22	31	45	10
1"1/4	- 1"	22	31	45	10
1"1/2	- 1"	22	32	50	5
2"	- 1"	24	36	60	5

2090

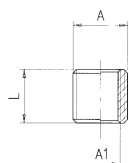
RIDUZIONE CILINDRICA - REDUCER (PARALLEL)



A	A1	B	L	CH	Conf. Pack.
1/8	- M5	6	10.5	14	50
1/4	- 1/8	8	13	17	50
3/8	- 1/8	9	14	19	25
1/2	- 1/8	10	15.5	24	25
3/8	- 1/4	9	14	19	25
1/2	- 1/4	10	15.5	24	25
1/2	- 3/8	10	15.5	24	25
3/4	- 3/8	12	17.5	30	25
3/4	- 1/2	12	17.5	30	25

2095

RIDUZIONE CILINDRICA - REDUCER (PARALLEL)

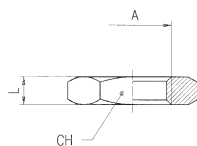


A	A1	L	Conf. Pack.
1/4	- 1/8	8	50
3/8	- 1/4	9	50
1/2	- 3/8	10	50
3/4	- 1/2	14	25
1"	- 3/4	20	25

ARTICOLO NON NICHELATO
ARTICLE NOT NICHEL-PLATED

2096

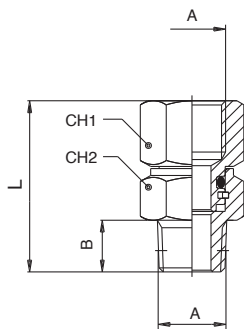
GHIERA - NUT



A	L	CH	Conf. Pack.
1/8	4.5	14	50
1/4	5	17	50
3/8	6	20	50
1/2	6	24	50

2110

NIPPO CONICO ORIENTABILE - ORIENTING NIPPLE (TAPER)



A	B	CH1	CH2	L	Conf. Pack.
1/8	7.5	13	13	25	50
1/4	11	16	15	33	25
3/8	11.5	20	17	35.5	25

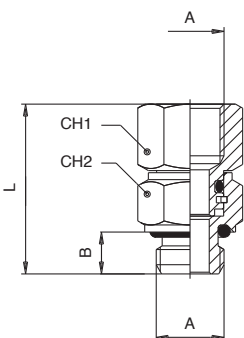
Temperatura minima / Minimum temperature: -20 °C
 Temperatura massima / Maximum temperature: +80 °C

Pressione minima / Minimum pressure: **-0.99 bar** (-0.099 MPa)
 Pressione massima / Maximum pressure: **+15 bar** (1.5 MPa)



2115

NIPPO CILINDRICO ORIENTABILE - ORIENTING NIPPLE (PARALLEL)



A	B	CH1	CH2	L	Conf. Pack.
1/8	6	13	13	24.5	50
1/4	8	16	16	31	25
3/8	9	20	18	34.5	25

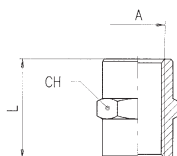
Temperatura minima / Minimum temperature: -20 °C
 Temperatura massima / Maximum temperature: +80 °C

Pressione minima / Minimum pressure: **-0.99 bar** (-0.099 MPa)
 Pressione massima / Maximum pressure: **+15 bar** (1.5 MPa)



3000

MANICOTTO - SLEEVE

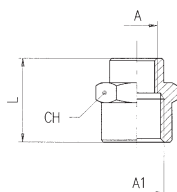
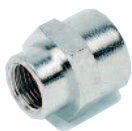


A	L	CH	Conf. Pack.
M5	11	8	50
1/8	15	14	50
1/4	22	17	25
3/8	24	22	25
1/2	30	26	25
3/4	32	32	25
1"	46	40	10



3010

MANICOTTO DI RIDUZIONE - REDUCING SLEEVE

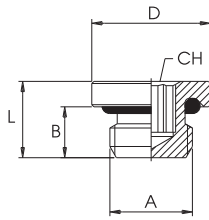


A	A1	L	CH	Conf. Pack.
M5	- 1/8	13	14	50
1/8	- 1/4	19	17	50
1/8	- 3/8	20	22	25
1/8	- 1/2	24	24	25
1/4	- 3/8	23	22	25
1/4	- 1/2	25	24	25
3/8	- 1/2	27.5	24	25
1/2	- 3/4	30	30	25
1/2	- 1"	39	40	10
3/4	- 1"	41	40	10



3015

TAPPO MASCHIO CILINDRICO ESAGONO INCASSATO CON O-RING NBR - MALE PLUG (PARALLEL) WITH EXAGON EMBEDDED AND NBR O-RING



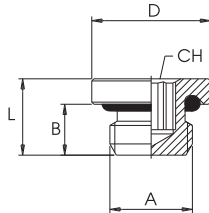
A	B	L	D	CH	Conf. Pack.
M5	4	6	8	2	50
1/8	6	8.5	14	5	50
1/4	8	11	17	6	50
3/8	9	12.5	20	8	25
1/2	10	13.5	25	10	25

Temperatura minima / Minimum temperature: -20 °C
 Temperatura massima / Maximum temperature: +80 °C

Pressione minima / Minimum pressure: **-0.99 bar** (-0.099 MPa)
 Pressione massima / Maximum pressure: **+15 bar** (1.5 MPa)

3015V

TAPPO MASCHIO CILINDRICO ESAGONO INCASSATO CON O-RING FKM-MALE PLUG (PARALLEL) WITH EXAGON EMBEDDED AND FKM O-RING



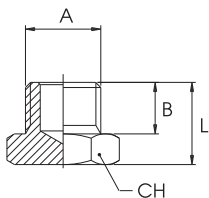
A	B	L	D	CH	Conf. Pack.
M5	4	6	8	2	50
1/8	6	8.5	14	5	50
1/4	8	11	17	6	50
3/8	9	12.5	20	8	25
1/2	10	13.5	25	10	25

Temperatura minima / Minimum temperature: -15 °C
 Temperatura massima / Maximum temperature: +200 °C

Pressione minima / Minimum pressure: **-0.99 bar** (-0.099 MPa)
 Pressione massima / Maximum pressure: **+15 bar** (1.5 MPa)

3020

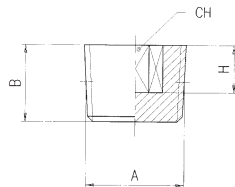
TAPPO MASCHIO CILINDRICO - MALE PLUG (PARALLEL)



A	B	L	CH	Conf. Pack.
M5	4.5	8	8	50
1/8	6.5	10	14	50
1/4	9	13	17	50
3/8	9.5	13.5	19	25
1/2	10	14.5	24	25
3/4	11	16	30	25
1"	12	17	40	10

3025

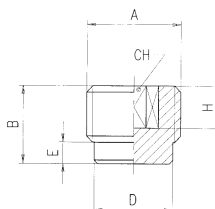
TAPPO MASCHIO CONICO - MALE PLUG (TAPER)



A	B	H	CH	Conf. Pack.
1/8	7.5	5	5	50
1/4	10	7	6	50
3/8	11	7	8	50
1/2	13	8	10	25

3026

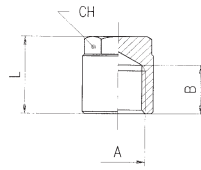
TAPPO MASCHIO CILINDRICO - MALE PLUG (PARALLEL)



A	B	D	E	H	CH	Conf. Pack.
1/8	8	8	2	5	5	50
1/4	11	11	3	7	6	50
3/8	12.5	14.5	3.5	8.5	8	50
1/2	14	18	4	10	10	25
3/4	14	21.5	3	10	12	25

3030

TAPPO FEMMINA - FEMALE PLUG

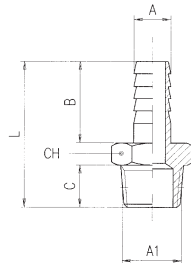


A	B	L	CH	Conf. Pack.
1/8	7.5	11	12	50
1/4	11	19	14	50
3/8	11.5	20	17	25
1/2	14	22	19	25



3040

PORTAGOMMA MASCHIO CONICO - MALE HOSE ADAPTER (TAPER)

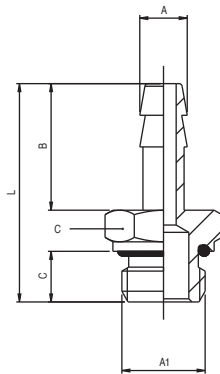


A	A1	B	C	L	CH	Conf. Pack.
6	1/8	19.5	7.5	32	12	50
6	1/4	19.5	11	35.5	14	50
7	1/8	19.5	7.5	32	12	50
7	1/4	19.5	11	35.5	14	50
8	1/8	19.5	7.5	32	12	50
8	1/4	19.5	11	35.5	14	50
9	1/8	19.5	7.5	32	12	50
9	1/4	19.5	11	35.5	14	50
9	3/8	19.5	11.5	36	17	25
9	1/2	19.5	14	39	22	25
10	1/8	19.5	7.5	32	12	50
10	1/4	19.5	11	35.5	14	50
10	3/8	19.5	11.5	36	17	25
10	1/2	19.5	14	39	22	25
12	1/4	19.5	11	35.5	14	50
12	3/8	19.5	11.5	36	17	25
12	1/2	19.5	14	39	22	25
14	3/8	19.5	11.5	36	17	25
14	1/2	19.5	14	39	22	25
16	3/8	19.5	11.5	36	17	25
16	1/2	19.5	14	39	22	25
16	3/4	19.5	16.5	43.5	27	25
17	3/8	19.5	11.5	36	18	25
17	1/2	19.5	14	39	22	25
18	3/8	19.5	11.5	36	19	25
18	1/2	19.5	14	39	22	25
18	3/4	19.5	16.5	43.5	27	25
20	3/8	19.5	11.5	46.5	21	IN ESAURIMENTO / TILL STOCK LASTS 25
20	1/2	30	14	49.5	22	25
20	3/4	30	13.5	50.5	27	25
25	3/4	30	14.5	51.5	27	25
25	1"	30	16	53.5	34	10
NEW						
20	3/8	30	11.5	46.5	21	25



3044

PORTAGOMMA MASCHIO CILINDRICO CON O - RING - MALE HOSE ADAPTER (PARALLEL) WITH O - RING



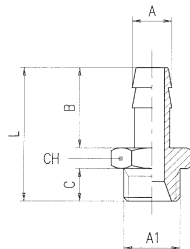
A	A1	B	C	L	CH	Conf. Pack.
4.5	- M5	15	4	24	8	50
7	- 1/8	20	6	31	13	50
7	- 1/4	20	8	34.5	16	50
8	- 1/8	20	6	31	13	50
8	- 1/4	20	8	34.5	16	50
9	- 1/8	20	6	31	13	50
9	- 1/4	20	8	34.5	16	50
9	- 3/8	20	9	35.5	19	25
12	- 1/4	20	8	34.5	16	25
12	- 3/8	20	9	35.5	19	25
12	- 1/2	22	10	39.5	24	25
17	- 3/8	24	9	39.5	19	25
17	- 1/2	24	10	41.5	24	25

Temperatura minima / Minimum temperature: -20 °C
 Temperatura massima / Maximum temperature: +80 °C

Pressione minima / Minimum pressure: -0.99 bar (-0.099 MPa)
 Pressione massima / Maximum pressure: +15 bar (1.5 MPa)

3045

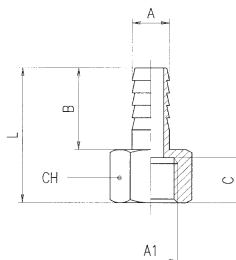
PORTAGOMMA MASCHIO CILINDRICO - MALE HOSE ADAPTER (PARALLEL)



A	A1	B	C	L	CH	Conf. Pack.
4.5	- M5	15	4	23	8	50
7	- 1/8	20	6	30	14	50
7	- 1/4	20	8	33	17	50
8	- 1/8	20	6	30	14	50
8	- 1/4	20	8	33	17	50
9	- 1/8	20	6	30	14	50
9	- 1/4	20	8	33	17	50
9	- 3/8	20	9	34	19	25
12	- 1/4	20	8	33	17	25
12	- 3/8	20	9	34	19	25
12	- 1/2	22	10	37.5	24	25
17	- 3/8	24	9	38	19	25
17	- 1/2	24	10	39.5	24	25

3050

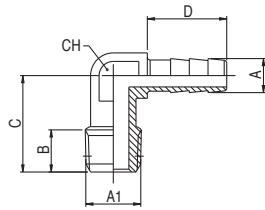
PORTAGOMMA FEMMINA - FEMALE HOSE ADAPTER



A	A1	B	C	L	CH	Conf. Pack.
6	- 1/8	19.5	8.5	30	14	50
7	- 1/8	19.5	8.5	30	14	50
7	- 1/4	19.5	11	32.5	17	50
8	- 1/4	19.5	11	32.5	17	50
9	- 1/4	19.5	11	32.5	17	50
9	- 3/8	19.5	11.5	33.5	20	25
10	- 3/8	19.5	11.5	33.5	20	25
12	- 3/8	19.5	11.5	33.5	20	25
12	- 1/2	19.5	14.5	37.5	24	25

3055

RACCORDO A L PORTAGOMMA MASCHIO - MALE HOSE ADAPTER ELBOW

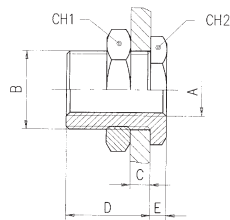


A	A1	B	C	D	CH	Conf. Pack.
6	- 1/8	7.5	17	14	11	50
6	- 1/4	11	22	14	11	50
7	- 1/8	7.5	17	14	11	25
7	- 1/4	11	22	14	11	25
9	- 1/4	11	22	14	11	25



3060

RACCORDO DI ATTRAVERSAMENTO - BULKHEAD CONNECTOR

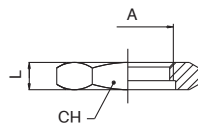


A	B	C MAX	D	E	CH1	CH2	Conf. Pack.
M5	M10x1	7	10.5	3.5	14	14	25
1/8	M16x1.5	10	14	4	22	19	25
1/4	M20x1.5	16	21	4	27	24	25
3/8	M26x1.5	15	21	5	32	30	25
1/2	M28x1.5	21	27	6	36	32	10



1704

GHIERA - NUT

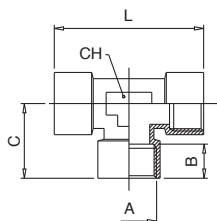


A	CH	L	Conf. Pack.
M10x1	14	4	50
M16x1.5	22	5	50
M20x1.5	27	6	50
M26x1.5	32	7	50
M28x1.5	36	7	50



4000

RACCORDO A T FEMMINA - FEMALE TEE

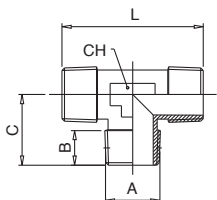


A	B	C	L	CH	Conf. Pack.
1/8	8.5	19.5	39	12	25
1/4	11	24.5	49	13	25
3/8	12	27	54	16	25
1/2	15	32	64	20	10
3/4	16.5	36.5	73	27	10
1"	19	45	90	30	5



4010

RACCORDO A T MASCHIO - MALE TEE

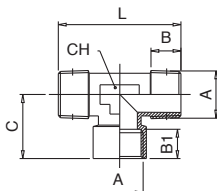


A	B	C	L	CH	Conf. Pack.
1/8	8	17.5	35	12	25
1/4	11	23	46	13	25
3/8	11.5	25.5	51.5	16	25
1/2	14	29.5	59	20	10
3/4	14.5	32	64	27	10
1"	16.8	39	78	30	5



4020

RACCORDO A T FEMMINA CENTRALE - CENTRE LEG FEMALE TEE

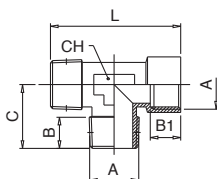


A	B	B1	C	L	CH	Conf. Pack.
1/8	8	8.5	19.5	35	12	25
1/4	11	11	24.5	46	13	25
3/8	11.5	12	27	51	16	25
1/2	14	15	32	59	20	10
3/4	14.5	16.5	36.5	64	27	10
1"	16.8	19	45	78	30	5



4030

RACCORDO A T FEMMINA LATERALE - OFF SET FEMALE TEE

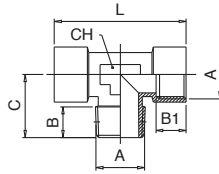


A	B	B1	C	L	CH	Conf. Pack.
1/8	8	8.5	17.5	37	12	25
1/4	11	11	23	47.5	13	25
3/8	11.5	12	25.5	52.5	16	25
1/2	14	15	29.5	61.5	20	10
3/4	14.5	16.5	32	68.5	27	10
1"	16.8	19	39	84	30	5



4040

RACCORDO A T MASCHIO CENTRALE - CENTRE LEG MALE TEE

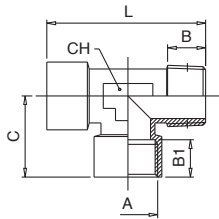


A	B	B1	C	L	CH	Conf. Pack.
1/8	8	8.5	17.5	39	12	25
1/4	11	11	23	49	13	25
3/8	11.5	12	25.5	54	16	25
1/2	14	15	29.5	64	20	10
3/4	14.5	16.5	32	73	27	10
1"	16.8	19	39	90	30	5



4050

RACCORDO A T MASCHIO LATERALE - OFF SET MALE TEE

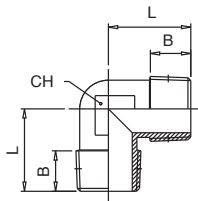


A	B	B1	C	L	CH	Conf. Pack.
1/8	8	8.5	19.5	37	12	25
1/4	11	11	24.5	47.5	13	25
3/8	11.5	12	27	52.5	16	25
1/2	14	15	32	61.5	20	10
3/4	14.5	16.5	36.5	68.5	27	10
1"	16.8	19	45	84	30	5



5000

RACCORDO A L MASCHIO - MALE ELBOW

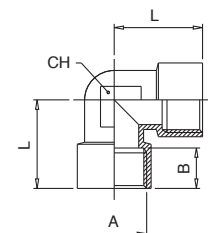


A	B	L	CH	Conf. Pack.
1/8	7.5	18	11	50
1/4	11	24	13	25
3/8	12	27	17	25
1/2	14	29.5	20	25
3/4	14.5	32	27	10
1"	16.8	39	30	5



5010

RACCORDO A L FEMMINA - FEMALE ELBOW

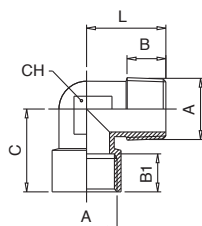


A	B	L	CH	Conf. Pack.
1/8	8.5	21	11	50
1/4	11	25.5	13	25
3/8	11.5	28	17	25
1/2	15	32	20	25
3/4	16.5	36.5	27	10
1"	19	45	30	5



5020

RACCORDO A L MASCHIO-FEMMINA - MALE-FEMALE ELBOW

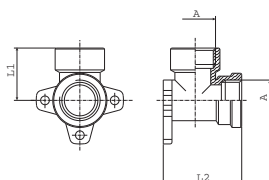


A	B	B1	C	L	CH	Conf. Pack.
1/8	7.5	8.5	21	18	11	50
1/4	11	11	25.5	24	13	25
3/8	11.5	12	28	27	17	25
1/2	14	15	32	29.5	20	25
3/4	14.5	16.5	36.5	32	27	10
1"	16	19	45	39	30	5



5050

RACCORDO A STAFFA 90° FEMMINA - FEMALE BRACKET FITTING 90°

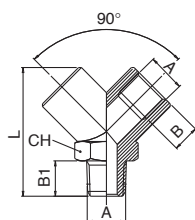


A	L1	L2	Conf. Pack.
1/2	27	40.5	10



6000

RACCORDO A Y 90° MASCHIO - MALE Y 90°

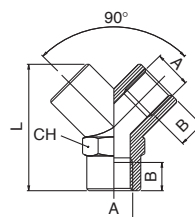


A	B	B1	L	CH	Conf. Pack.
1/8	8.5	9	33	14	25
1/4	11	11	37	17	25
3/8	11.5	12.5	46	22	20
1/2	14	16.5	58	26	10



6010

RACCORDO A Y 90° FEMMINA - FEMALE Y 90°

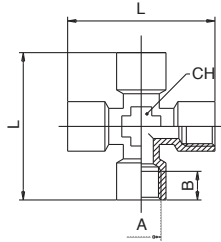


A	B	L	CH	Conf. Pack.
1/8	8.5	33	14	25
1/4	11	37	17	25
3/8	11.5	46	22	20
1/2	14	58	26	10



6020

RACCORDO A CROCE FEMMINA - FEMALE EQUAL CROSS

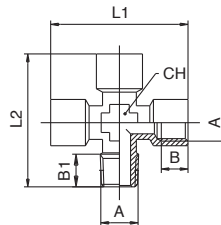


A	B	L	CH	Conf. Pack.
1/8	8.5	39	11	25
1/4	11	50	13	25
3/8	12	56	17	10
1/2	15	64	20	10



6025

RACCORDO A CROCE MASCHIO-FEMMINA - MALE-FEMALE EQUAL CROSS

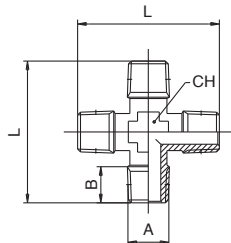


A	B	B1	L1	L2	CH	Conf. Pack.
1/8	8.5	8	39	37	11	25
1/4	11	11	50	48.5	13	25
3/8	12	11.5	56	54	17	10
1/2	15	14	64	61	20	10



6030

RACCORDO A CROCE MASCHIO - MALE EQUAL CROSS

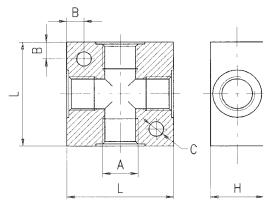
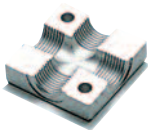


A	B	L	CH	Conf. Pack.
1/8	8	35	11	25
1/4	11	47	13	25
3/8	11.5	52	17	10
1/2	14	58	20	10



6040

RACCORDO A CROCE IN ALLUMINIO - ALUMINIUM TEE CROSS

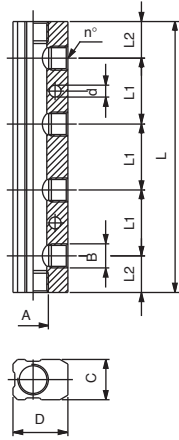
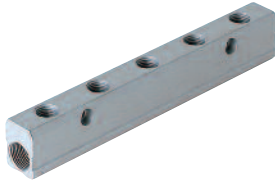


A	L	H	B	C	Conf. Pack.
1/8	25	15	4.3	4.5	25
1/4	40	20	6.5	5.5	10
3/8	50	25	7.5	5.5	5
1/2	50	30	7.5	5.5	5



6047

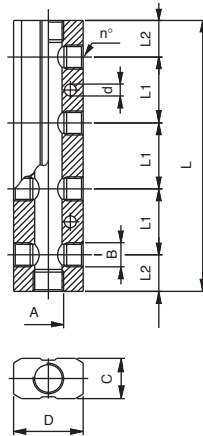
RIPARTITORE IN ALLUMINIO - ALUMINIUM DISTRIBUTION MANIFOLD



A	B	n°	C	D	L1	L2	L	d	Conf. Pack.
1/4 - 1/8 - 2	18	24	30	17.5	65	4.5			5
1/4 - 1/8 - 3	18	24	30	17.5	95	4.5			5
1/4 - 1/8 - 4	18	24	30	17.5	125	4.5			5
1/4 - 1/8 - 5	18	24	30	17.5	155	4.5			5
1/4 - 1/8 - 6	18	24	30	17.5	185	4.5			5
3/8 - 1/4 - 2	22	30	36	20	76	5.5			5
3/8 - 1/4 - 3	22	30	36	20	112	5.5			5
3/8 - 1/4 - 4	22	30	36	20	148	5.5			5
3/8 - 1/4 - 5	22	30	36	20	184	5.5			5
3/8 - 1/4 - 6	22	30	36	20	220	5.5			5
1/2 - 3/8 - 2	26	35	40	25	90	5.5			5
1/2 - 3/8 - 3	26	35	40	25	130	5.5			5
1/2 - 3/8 - 4	26	35	40	25	170	5.5			5
1/2 - 3/8 - 5	26	35	40	25	210	5.5			5
1/2 - 3/8 - 6	26	35	40	25	250	5.5			5

6048

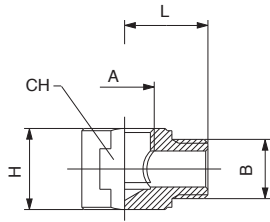
RIPARTITORE DOPPIO IN ALLUMINIO - ALUMINIUM DOUBLE DISTRIBUTION MANIFOLD



A	B	n°	C	D	L1	L2	L	d	Conf. Pack.
1/4 - 1/8 - 2	18	30	30	17.5	65	4.5			5
1/4 - 1/8 - 3	18	30	30	17.5	95	4.5			5
1/4 - 1/8 - 4	18	30	30	17.5	125	4.5			5
1/4 - 1/8 - 5	18	30	30	17.5	155	4.5			5
1/4 - 1/8 - 6	18	30	30	17.5	185	4.5			5
3/8 - 1/4 - 2	22	38	36	20	76	5.5			5
3/8 - 1/4 - 3	22	38	36	20	112	5.5			5
3/8 - 1/4 - 4	22	38	36	20	148	5.5			5
3/8 - 1/4 - 5	22	38	36	20	184	5.5			5
3/8 - 1/4 - 6	22	38	36	20	220	5.5			5
1/2 - 3/8 - 2	26	44	40	25	90	5.5			5
1/2 - 3/8 - 3	26	44	40	25	130	5.5			5
1/2 - 3/8 - 4	26	44	40	25	170	5.5			5
1/2 - 3/8 - 5	26	44	40	25	210	5.5			5
1/2 - 3/8 - 6	26	44	40	25	250	5.5			5

6070

RACCORDO A L MASCHIO-FEMMINA - MALE-FEMALE ELBOW FITTING

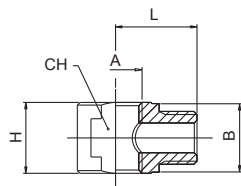


A	B	H	L	CH	Conf. Pack.
1/8	- 1/8	13	15	13	25
1/4	- 1/4	18	19	18	25



6080

RACCORDO A T MASCHIO-FEMMINA-FEMMINA - MALE-FEMALE-FEMALE TEE FITTING

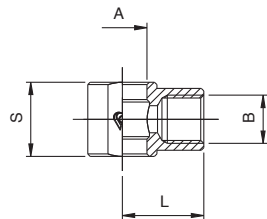


A	B	H	L	CH	Conf. Pack.
1/8	- 1/8	13	15	13	25
1/4	- 1/4	18	18.5	18	25



6090

ANELLO ORIENTABILE A L FEMMINA - FEMALE SINGLE BANJO BODY



B	A	L	S	Conf. Pack.
1/8	10	16.5	15	25
1/4	13	22	17	25
3/8	16.7	26	20	25



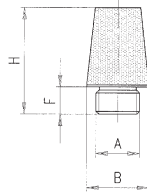
7000

SILENZIATORE - SILENCER

Δ = Abbattimento acustico (dB) a 6 bar
Acoustic fading (dB) at 6 bar

CARATTERISTICHE TECNICHE / TECHNICAL CHARACTERISTICS

Pressione massima / maximum pressure: 12 bar
 Temperatura minima / minimum temperature: -10°C
 Temperatura massima / maximum temperature: +80°C
 Porosità media / porosity: 40%
 Soglia di filtrazione / filtration threshold: 36 µm



A	F	B	H	Δ	Conf. Pack.
1/8	6	12	21	42.6	25
1/4	6	15	25	44	25
3/8	8	19	36	27.3	25
1/2	10	23	43	19	25
3/4	13	30	53	16	25
1"	15	37	63	16.6	10



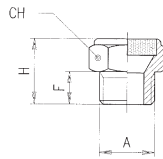
7010

SILENZIATORE - SILENCER

Δ = Abbattimento acustico (dB) a 6 bar
Acoustic fading (dB) at 6 bar

CARATTERISTICHE TECNICHE / TECHNICAL CHARACTERISTICS

Pressione massima / maximum pressure: 12 bar
 Temperatura minima / minimum temperature: -10°C
 Temperatura massima / maximum temperature: +80°C
 Porosità media / porosity: 40%
 Soglia di filtrazione / filtration threshold: 36 µm



A	F	H	CH	Δ	Conf. Pack.
1/8	6	13	13	30.6	25
1/4	8	16	16	33	25
3/8	9	18	19	35	25
1/2	11	20	24	23	25
3/4	13	24	30	26	25



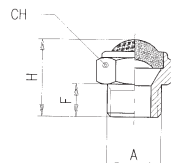
7020

SILENZIATORE - SILENCER

Δ = Abbattimento acustico (dB) a 6 bar
Acoustic fading (dB) at 6 bar

CARATTERISTICHE TECNICHE / Technical characteristics

Pressione massima / maximum pressure: 12 bar
 Temperatura minima / minimum temperature: -10°C
 Temperatura massima / maximum temperature: +80°C
 Porosità media / porosity: 60%
 Soglia di filtrazione / filtration threshold: 50 µm

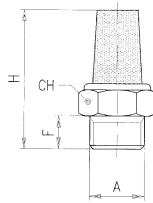


A	F	H	CH	Δ	Conf. Pack.
M5	3,5	8	8	27	25
1/8	6	16	13	32.6	25
1/4	8	19	16	31	25
3/8	9	21	19	24	25
1/2	10	23	24	29	25
3/4	10	27	30	11	25
1"	15	29	36	25	10



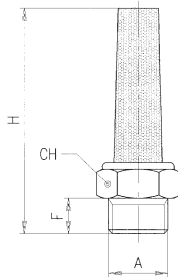
7030

SILENZIATORE - SILENCER



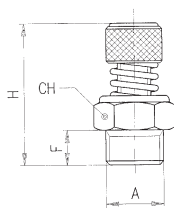
7040

SILENZIATORE - SILENCER



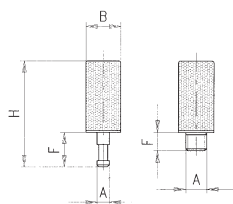
7050

SILENZIATORE - SILENCER



7060

SILENZIATORE - SILENCER



Abbattimento acustico (dB) 6 bar
Acoustic fading (dB) at 6 bar

CARATTERISTICHE TECNICHE / TECHNICAL CHARACTERISTICS

Pressione massima / maximum pressure: 12 bar
 Temperatura minima / minimum temperature: -10°C
 Temperatura massima / maximum temperature: +80°C
 Porosità media / porosity: 40%
 Soglia di filtrazione / filtration threshold: 36 µm

A	F	H	CH	Δ	Conf. Pack.
M5	4	22	8	-	25
1/8	6	29	13	14.6	25
1/4	8	32	16	26	25
3/8	9	43	19	26	25
1/2	11	53	24	20	25
3/4	13	53	30	19	10
1"	15	66	36	17	10

CARATTERISTICHE TECNICHE / TECHNICAL CHARACTERISTICS

Pressione massima / maximum pressure: 12 bar
 Temperatura minima / minimum temperature: -10°C
 Temperatura massima / maximum temperature: +80°C
 Porosità media / porosity: 40%
 Soglia di filtrazione / filtration threshold: 36 µm

A	F	H	CH	Conf. Pack.
1/8	6	43	13	25
1/4	8	51	16	25
3/8	9	56	19	25
1/2	11	68	24	10
3/4	13	70	30	10



Abbattimento acustico (dB) 6 bar
Acoustic fading (dB) at 6 bar

CARATTERISTICHE TECNICHE / TECHNICAL CHARACTERISTICS

Pressione massima / maximum pressure: 12 bar
 Temperatura minima / minimum temperature: -10°C
 Temperatura massima / maximum temperature: +80°C
 Porosità media / porosity: 40%
 Soglia di filtrazione / filtration threshold: 36 µm

A	F	Hmin	Hmax	CH	Δ	Conf. Pack.
1/8	6	26	28	13	37.6	25
1/4	8	30	32	15	40	25
3/8	10	35	38	18	42	25
1/2	11	36	39	22	41	25

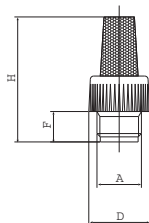
CARATTERISTICHE TECNICHE / TECHNICAL CHARACTERISTICS

Pressione massima / maximum pressure: 12 bar
 Temperatura minima / minimum temperature: -10°C
 Temperatura massima / maximum temperature: +80°C
 Porosità media / porosity: 40%
 Soglia di filtrazione / filtration threshold: 36 µm

Misura/Size	A	F	B	H	Conf. Pack.
M5	M5	4.5	8.5	19.5	25
4/2.7	3.5	8.5	8.5	25.5	25
6/4	5	11	8.5	26	25

7065

SILENZIATORE - SILENCER



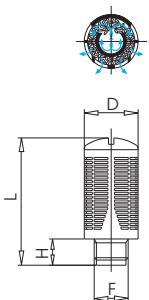
CARATTERISTICHE TECNICHE / TECHNICAL CHARACTERISTICS

Pressione massima / maximum pressure:	6 bar
Temperatura minima / minimum temperature:	-10°C
Temperatura massima / maximum temperature:	+70°C
Porosità media / porosity:	40%
Soglia di filtrazione / filtration threshold:	36 µm

A	D	F	H	Conf. Pack.
1/8	15.5	7.5	30	25
1/4	18	9	36	25
3/8	22	11	48	25
1/2	28	12	58	25
3/4	34.5	15	60	10
1"	42.5	15	70	10

7070

SILENZIATORE IN RESINA ACETALICA CON MATERIALE PLASTICO FONOASSORBENTE
SILENCER MADE IN ACETALIC RESIN WITH PLASTIC SOUNDPROOFING MATERIAL



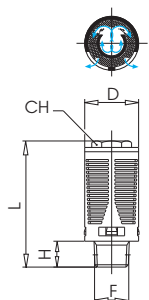
CARATTERISTICHE TECNICHE / TECHNICAL CHARACTERISTICS

Pressione massima / maximum pressure:	6 bar
Temperatura minima / minimum temperature:	-10°C
Temperatura massima / maximum temperature:	+70°C

F	H	D	L	Conf. Pack.
1/8	6	15.5	32.5	25
1/4	8	19.5	43	25
3/8	11	24.5	58	25
1/2	11	24.5	58	10
3/4	18	48	115	5
1"	18	48	115	5

7080

SILENZIATORE IN PA66 E FELTRO - SILENCER MADE IN PA66 WITH FELT



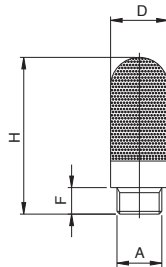
CARATTERISTICHE TECNICHE / TECHNICAL CHARACTERISTICS

Pressione massima / maximum pressure:	6 bar
Temperatura minima / minimum temperature:	-10°C
Temperatura massima / maximum temperature:	+70°C

F	H	D	L	CH	Conf. Pack.
1/8	6	15.5	33	10	25
1/4	8	19.5	43	12	25
3/8	11	24.5	58	16	25
1/2	11	24.5	58	16	10
3/4	18	50	118	25	5
1"	18	50	118	25	5

7100

SILENZIATORI IN POLIETILENE - POROUS POLYETHYLENE SILENCER



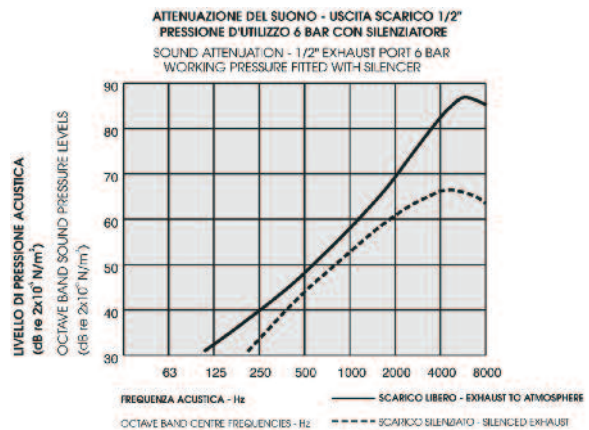
Il diagramma mostra la distribuzione della frequenza dell'energia del suono da un getto d'aria ad una pressione di circa 6 bar da un tipico scarico di uscita di una valvola pneumatica da 1/2". La zona critica fra 1 e 4 KHz, è la zona dove l'udito umano è più sensibile e dove gli effetti psicologici agli alti livelli di rumore sono più dannosi. Come si nota dal diagramma l'attenuazione del suono è di circa 20-25 dB ad una pressione di 6 bar.

In the diagram is shown the frequency distribution of the sound energy in an 6 bar air jet from a typical 1/2" control valve exhaust port. The critical region is that between 1 and 4 KHz, the range where psychological effects at high noise levels are most damaging. Sound reduction for this silencer is approximately 20-25 dB at 6 bar working pressure.

CARATTERISTICHE TECNICHE / TECHNICAL CHARACTERISTICS

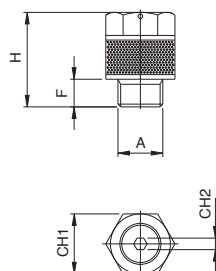
Pressione massima / maximum pressure: 10 bar
 Temperatura minima / minimum temperature: -15°C
 Temperatura massima / maximum temperature: +100°C
 Soglia di filtrazione / filtration threshold: 75 µm

A	F	H	D	Conf. Pack.
M5	4	23	6.5	25
1/8	6	34	12.5	25
1/4	7	42.5	15.5	25
3/8	11.5	67.5	18.5	25
1/2	11	78	23.5	10
3/4	15.5	140	38.5	5
1"	19.5	160	49	5



7110

SILENZIATORI IN POLIETILENE CON REGOLAZIONE DI SCARICO - POROUS POLYETHYLENE RESTRICTOR SILENCER



L'unione di un'accurata e facile regolazione con gli elementi dei silenziatori porosi in polietilene aumenta quelle che sono le prestazioni di questo articolo, le cui caratteristiche sono riportate nel grafico a fianco.

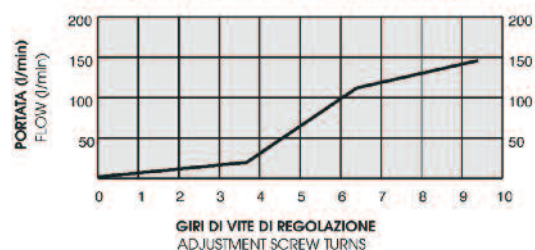
The combination of accurate and easy adjustment with the porous polyethylene silencing increase the performance of this article, which characteristics are shown in the following diagram.

CARATTERISTICHE TECNICHE / TECHNICAL CHARACTERISTICS

Pressione massima / maximum pressure: 10 bar
 Temperatura minima / minimum temperature: -15°C
 Temperatura massima / maximum temperature: +100°C
 Soglia di filtrazione / filtration threshold: 75 µm

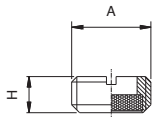
A	F	H	CH1	CH2	Conf. Pack.
M5	5	16	8	1.5	25
1/8	6	20.5	13	2.5	25
1/4	7	29	15	4	25
3/8	8	38	20	6	25
1/2	10	50	25	8	10

GRAFICO PORTATE PER SILENZIATORI REGOLATI 1/4" A 0,254 bar
 TYPICAL FLOW TEST GRAPH FOR 1/4" RESTRICTORS 0.254 bar



7120

SILENZIATORE A PASTIGLIA CON TAGLIO CACCIAVITE - PAD SILENCER WITH SLOT FOR SCREWDRIVER



CARATTERISTICHE TECNICHE / TECHNICAL CHARACTERISTICS

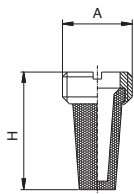
Pressione massima / maximum pressure:	12 bar
Temperature / temperature:	-10°C / +80°C
Soglia di filtrazione / filtration threshold:	120 µm

A	H	Conf. Pack.
1/8	4	25
1/4	6	25
3/8	6	25
1/2	9	25
3/4	10	10
1"	10	10



7130

SILENZIATORE A PASTIGLIA FILTRANTE CONICO TAGLIO CACCIAVITE - SILENCER WITH FILTERING PAD - (TAPER) WITH SLOT FOR SCREWDRIVER



CARATTERISTICHE TECNICHE / TECHNICAL CHARACTERISTICS

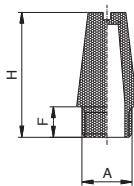
Pressione massima / maximum pressure:	12 bar
Temperature / temperature:	-10°C / +80°C
Soglia di filtrazione / filtration threshold:	50 µm

A	H	Conf. Pack.
1/8	15	25
1/4	18	25
3/8	21	25
1/2	27	25
3/4	36	10
1"	46	10



7140

SILENZIATORE INTEGRALE CON TAGLIO CACCIAVITE - INTEGRAL SILENCER WITH SLOT FOR SCREWDRIVER



CARATTERISTICHE TECNICHE / TECHNICAL CHARACTERISTICS

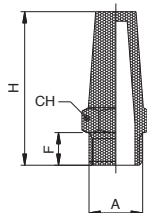
Pressione massima / maximum pressure:	12 bar
Temperature / temperature:	-10°C / +80°C
Soglia di filtrazione / filtration threshold:	50 µm

A	H	F	Conf. Pack.
1/8	21	5.5	25
1/4	27	8.5	25
3/8	36	11	25
1/2	44	11	25
3/4	63	13	10
1"	75	15	10



7150

SILENZIATORE INTEGRALE CON CHIAVE ESAGONALE - INTEGRAL SILENCER WITH HEXAGONAL WRENCH



CARATTERISTICHE TECNICHE / TECHNICAL CHARACTERISTICS

Pressione massima / maximum pressure:	12 bar
Temperature / temperature:	-10°C / +80°C
Soglia di filtrazione / filtration threshold:	50 µm

A	H	F	CH	Conf. Pack.
1/8	28	6	13	25
1/4	31	8	17	25
3/8	36	10	22	25
1/2	44	12	27	25
3/4	54	14	32	10
1"	66	16	41	10

